



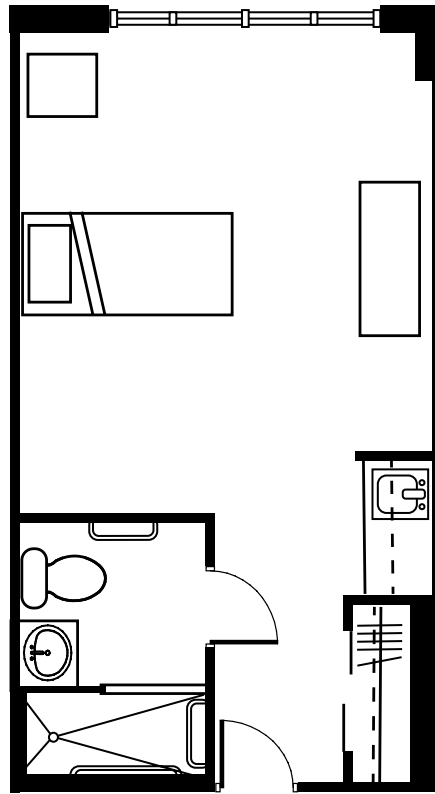
# Signature Pointe

A LIFE CARE SERVICES® COMMUNITY

ASSISTED LIVING

## Alexis

Private Unit • 308 sq. ft.



Date \_\_\_\_\_ Apartment # \_\_\_\_\_

**Community Fee**      \$ \_\_\_\_\_

Other                      \$ \_\_\_\_\_

Total \$ \_\_\_\_\_

**Monthly Fee**              \$ \_\_\_\_\_

2nd Person Fee              \$ \_\_\_\_\_

Total Monthly Fee      \$ \_\_\_\_\_

Prices subject to change without notice.

14655 Preston Road, Dallas, TX 75254 • P (972) 726-7575 • F (972) 726-9742 • SignaturePointeLCS.com



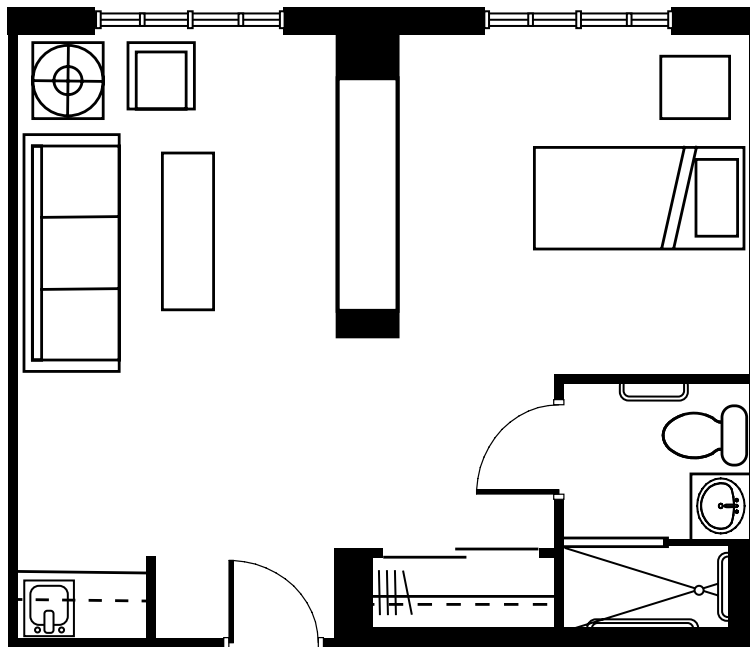
# Signature Pointe

A LIFE CARE SERVICES® COMMUNITY

ASSISTED LIVING

## Montfort

Suite • 412 sq. ft.



Date \_\_\_\_\_ Apartment# \_\_\_\_\_

**Community Fee**      \$ \_\_\_\_\_

Other                      \$ \_\_\_\_\_

Total \$ \_\_\_\_\_

**Monthly Fee**              \$ \_\_\_\_\_

2nd Person Fee              \$ \_\_\_\_\_

Total Monthly Fee      \$ \_\_\_\_\_

Prices subject to change without notice.

14655 Preston Road, Dallas, TX 75254 • P (972) 726-7575 • F (972) 726-9742 • SignaturePointeLCS.com



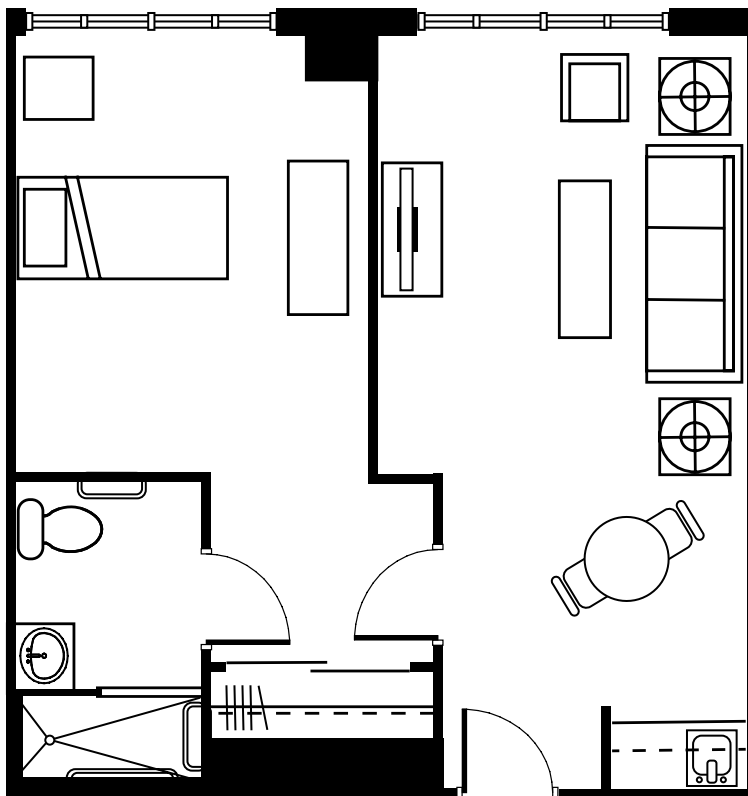
# Signature Pointe

A LIFE CARE SERVICES® COMMUNITY

ASSISTED LIVING

## Preston

1 Bedroom, 1 Bath • 512 sq. ft.



Date \_\_\_\_\_ Apartment # \_\_\_\_\_

**Community Fee** \$ \_\_\_\_\_

Other \$ \_\_\_\_\_

Total \$ \_\_\_\_\_

**Monthly Fee** \$ \_\_\_\_\_

2nd Person Fee \$ \_\_\_\_\_

Total Monthly Fee \$ \_\_\_\_\_

Prices subject to change without notice.

14655 Preston Road, Dallas, TX 75254 • P (972) 726-7575 • F (972) 726-9742 • SignaturePointeLCS.com